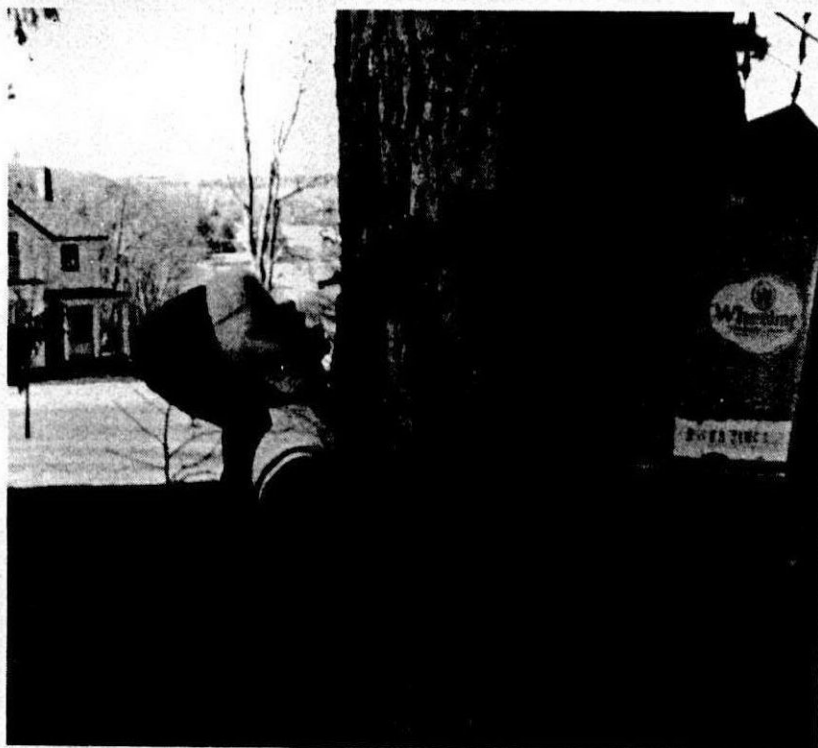




# MAPLE SYRUP

## DIGEST



**Vol. 25, No. 1**

**February 1985**

**Address Correction  
Requested to:  
Bainbridge, N.Y. 13733**

**BULK RATE  
U.S. POSTAGE PAID  
OXFORD, N. Y.  
PERMIT NO. 12**

# REPLACEMENT PANS

Side wall  
reinforcements  
on larger pans

7½" deep flues  
for faster boiling

300 Series  
Stainless  
Steel

Smooth  
knuckled  
reinforced  
top corners

Double  
locked  
seams



**We've got 'em  
or we'll make 'em!**

Now it's possible to retrofit any rig with pans of the quality only Grimm is known for.

Over 100 years experience and the finest craftsmen in the industry make us uniquely qualified to fabricate to suit your needs and specs.

Why not give us a call today, before the sugaring season rush, for a quote on a new set of quality pans for your rig.

**GRIMM**

G.H. Grimm Company, Inc.  
P.O. Box 130, Rutland, Vermont 05701  
800-448-8003 - in VT 800-442-9848

**KRESS** originator of the  
packaging alternative...

Available in sizes from 3-ounce  
to the **NEW 3-QUART JUG.**



**KRESS**

**CREATIONS, INC.** 349 Christian Street • Oxford, CT 06483 • (203) 264-9898

# MAPLE SYRUP DIGEST

Official publication of the  
NORTH AMERICAN MAPLE SYRUP COUNCIL

## Published & Edited by:

Lloyd H. Sipple, RD 2, Box 126  
Bainbridge, New York 13733  
Phone: 607-967-7208

Published four times a year  
(Feb., July, Oct., Dec.)  
Postage paid at Oxford, NY 13830

## Printed by:

La Tourette Rapid Reproductions Inc.  
13 No. Canal Street, Box 598  
Oxford, New York 13830

## Subscription rates:

United States:	1 yr. - \$2.00
	3 yr. - 5.00
Canada, US funds:	1 yr. - 3.00
	2 yr. - 5.00

## DEADLINE FOR JULY ISSUE-JUNE 1

## DIGEST ADVERTISING RATES

2 Page Spread.....	\$395.00
Full Page.....	210.00
1/2 Page Vert. or Hor..	115.00
Column Inch.....	16.50
Classified.....	.60 per word

Deadline for copy -  
By the first of the month preceding  
the date of the issue.

## COVER PICTURE

"How sweet it is"

Chandra Benjamin, Jefferson,  
NY, samples the "first run." A New  
York photo contest prize winner  
submitted by Cletus Benjamin.

## NORTH AMERICAN MAPLE SYRUP COUNCIL DIRECTORY OF OFFICERS

Gordon Gowen.....	Chairman
Alstead, NH 03602	603-835-6531
John Kroll.....	Vice-Chairman
Long Prairie, MN 56347	612-732-2575
Mike Girard.....	Secretary-Treasurer
Simsbury, CT 06070	203-658-5083

## DIRECTORS

Darrell Russ.....	203-542-5090
Norfolk, CT 06058	
Bill Webber.....	207-778-4234
Farmington, ME 04938	
James Graves.....	413-625-9066
Shelburne Falls, MA 01370	
Frank Majszak.....	616-228-5835
Maple City, MI 49664	
Arthur Merle.....	716-535-7136
Attica, NY 14011	
J.L. Maxwell Spicer.....	902-392-2823
Spencers Island, N.S. BOM1SO	
Ture Johnson.....	216-834-4206
Burton, OHIO 44021	
Ronald Shaw.....	705-325-6878
Hawkestone, ONT LOL1TO	
Edward Curtis.....	717-253-3759
Honesdale PA 18431	
Wilson Clark.....	802-325-3203
Wells, VT 05774	
John Roth.....	715-289-3820
Cadott, WI 54727	



# Editorial

## SUBSCRIPTIONS

With this issue we are completing the changeover to computer addressing. As we changed each state's list, we also eliminated all the "dead wood". From now on, the only ones who will receive the Digest are association members (if the association sends in it's members names and pays for the subscriptions) and individuals who subscribe directly to the Digest. A few complimentary copies will be sent to Extension Agents, Foresters, Libraries, etc.

Now that we've made the change it will be necessary that you keep your subscription up to date. If you belong to an association that takes care of it for you, fine. If not, you will have to take care of it yourself. As in past years, we're enclosing a return envelope, for your convenience, in the center of this issue.

We expect you to keep track of your own subscription either by making regular payments (one each year at this time) or by checking your check book stubs if you want to send enough for more than one year. Most of our subscribers take advantage of the 3 year saving. This is a very simple procedure for you and it will save us a huge amount in billing and accounting.

The rates are: \$2.00 a year or 3 years for \$5.00. Due to the high postage cost, we'll have to charge Canadians \$3.00 a year or \$5.00 for 2 years, U. S. funds.

## EDITORIAL ADVISORY BOARD

Last October, the North American Maple Syrup Council requested the forming of an editorial advisory board to assist the Digest editor in obtaining news items. A few appointments were made at the Council meeting and more since then with the help of the Council delegates. Eventually, we hope to have a

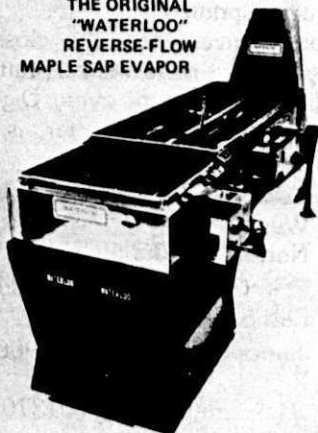
reporter in each maple producing state and province so that you can contact your reporter if you have anything you think should be printed.

For your convenience, the closing date for each next issue will be printed on the directory page of every Digest and the list of reporters, so far, is as follows:

- CONN.** Darrell Russ 203-642-5090  
Westside Rd.  
Norfolk, CT 06058
- MAINE** T.A. Greene 207-787-2424  
East Sebago, ME 04029
- MASS.** James Graves 413-625-9066  
R.D. 1  
Shelburne Falls, MA 01370
- MICH.** Frank Majszak 616-228-5835  
R.D.1, Baatz Rd.  
Maple City, MI 49664
- MINN.** Lane Townsend 218-879-9112  
24 Sugar Maple La.  
Esko, MN 55733
- N. H.** Fred E. Winch, Jr.  
603-938-2124  
Warner Rd., Rt. 103  
Bradford, NH 03221
- N. S.** J. L. Maxwell Spjcer  
902-392-2823  
Spencers Island  
NS, Canada BOM 1S0
- OHIO** Ture Johnson 216-834-4206  
Box 241  
Burton, OH 44021
- ONT.** Bill Robinson 519-529-7857  
RR 2, Auburn  
Ont., Canada
- PENN.** Robert McConnell  
814-274-9143  
Box 252  
Coudersport, PA 16915
- VT.** Ray Foulds 802-864-6305  
393 S. Prospect St.  
Burlington, VT 04501
- WISC.** John Roth 715-289-3820  
R.D. 1  
Cadott, WI 54727

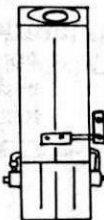
# WATERLOO EVAPORATORS-SINCE 1919

THE ORIGINAL  
"WATERLOO"  
REVERSE-FLOW  
MAPLE SAP EVAPOR



## SPECIAL FEATURES

Cold sap feed at front of flue pan eliminating long feed pipes and assuring immediate boiling since sap enters the hottest spot of the evaporator.



ULTRA VIOLET SAP  
STERILIZER 5 gpm

## The CADILLAC of The Industry

WATERLOO Evaporators Inc. 6064 Foster St.  
Waterloo, Que., Canada, JOE 2NO

Write for free catalogue  
Tyler Maple Farm - Distributor For New York State

## NEW ITEMS

# FOR SALE

- 1 - 3½ X 13 Waterloo evaporator with extra syrup pan.
- 1 - 2½ X 8½ Waterloo evaporator.
- 1 - 2 X 6 Waterloo evaporator.
- 1 - 2 X 5 Waterloo evaporator.

## USED ITEMS

- 1 - 4 X 10 raised flue SS pan, used 1 season.
- 1 - 3 X 10 Lightning evaporator used 2 seasons.
- 2 - 6 X 7 Lightning Style Flue pans.
- 2 - V pans for finishing syrup with steam.
- 1 - 2 X 6 Oil finisher complete with arch & burner.
- 1 - 6 X 14 King evaporator with steam hood.
- 1 - 6 X 18 Same as above. Both like new for half price.
- 1 - Felt filter washer with motor & tank.

**TYLER MAPLE FARMS, Box 77, Westford, NY 13488, 607-638-9474**

Also: Grimm, Lightning evaporators, Lamb tubing & supplies, Bacon & Kress jugs, bottles, most all other supplies needed for the maple producer in stock.

Terms can be arranged. Pay with syrup.

## COMING EVENTS

Connecticut Association Maple Workshop. Feb. 9, 12:30 - 4:30 at the Univ. of Connecticut W. B. Young Auditorium in Mansfield, CT.

Season Long Festival. Suppers every weekend featuring maple syrup. Producers open house at camps. Nova Scotia, Canada, Mar. 20 - Apr. 15.

Marathon Maple Festival, Marathon, NY Mar. 23 - 24

Somerset Co. Maple Festival, Meyersdale PA., Mar. 23 - 24 and 27 - 31.

Maine Maple Sunday, Displays in individual sugarhouses. Tentative date: Mar. 24

Michigan Maple Week - Statewide, Mar. 24 - 30. Crowning of Maple Queen at State Capitol.

Elmira Maple Syrup Festival, Elmira, Ont., Canada, Mar. 30

Andover Maple Festival, Andover, NY Mar. 30 - 31.

Geauga Co. Maple Festival, Chardon, Oh, Apr. 12, 13 & 14.

Belmore Maple Syrup Festival, Belmore, Ont., Apr. 13.

Vermont Maple Festival, St. Albans, VT, April 12, 13 & 14.

Elmvale Maple Festival, Elmvale, Ont. Canada, Apr. 13.

Endless Mountain Maple Festival, Troy, PA., Apr. 26 & 27.

Franklinville Maple Festival, Franklinville, NY, Apr. 26, 27 & 28.

Perth Festival of Maples, Perth, Ont., Canada, Apr. 27.

Potter-Tioga Maple Festival, Couderport, PA., May 4 & 5.

Schoharie Co. Maple Festival, Jefferson, NY, May 4 & 5.

Wisconsin Maple Festival & Antique Museum, Reynolds Plant, Aniwa, WI, May 26.

Michigan Maple Syrup Producers Assoc. Board of Directors meeting June 13.

Vermont Maplerama, Randolph Center, VT. Registration & Banquet at Vermont Technical College, July 19 & 20.

## MINNESOTA

Annual meeting of the Minnesota Maple Syrup Producers Assoc. is scheduled for May 3rd. at the Northwoods Restaurant in Barnum, Minnesota.

Mr. Phil Cook is currently working on projects to determine the feasibility of maple syrup production in Minnesota. He is also working with several compounds that may be used to speed up tap hole closure.

The MMSPA is working on a project involving marketing combination packets of pure maple syrup and wild rice.

Lane Townsend, Pres. MMSPA

### SHOW OFF YOUR FANCY

### SYRUP IN

JUGS BOTTLES JARS

MAPLE PRODUCTS SELL

BEST IN GLASS

WE ALSO CARRY MANY

TYPES OF PLASTIC CONTAINERS,

INCLUDING THE KRESS JUGS.

Send for complete list

M. R. CARY CORPORATION

P. O. Box 122

Salina Station

Syracuse, N. Y. 13208

LEADER LOST IT ...  
WATERLOO WANTS IT ...  
GRIMM IS GRIM ABOUT IT ... BUT

**SMALL BROTHERS U.S.A., INC.**

HAS IT!!

the big **NEWS** for '85

INTRODUCING THE

**MAPLE SYRUP EQUIPMENT SERVICE CENTER  
IN SWANTON, VERMONT**

● **A HUGE FACTORY OUTLET**

You won't believe the enormous stock of evaporators and equipment ... From RO machines to buckets.

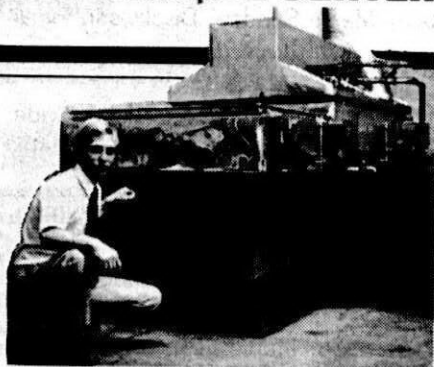
● **ABSOLUTELY THE BEST PRICES IN THE ENTIRE INDUSTRY**

Come and compare ... You will not find the quality and economy of **SMALL BROTHERS** at any of our competitors.

● **EXCELLENT DELIVERY SERVICE**

We get your equipment to you **WHEN** you need it ... and **WHERE** you need it.

**THE MOST COMPLETE LINE OF MAPLE SYRUP EQUIPMENT IN THE INDUSTRY**



David Buttolph, maple producer and operational manager of the Swanton Maple Syrup Equipment Service Center, in front of the 4'x12' 19-50 LIGHTNING EVAPORATOR.

● **AN INFORMATION CENTER**

Answers to your questions and solutions to your problems by experts.

Send me complete **FREE** information, catalog, and price list and nearest dealer

Name \_\_\_\_\_

Address \_\_\_\_\_

State/Zip \_\_\_\_\_

Have your representative contact me as soon as possible

Phone ( ) \_\_\_\_\_

Number of Taps \_\_\_\_\_

**SMALL BROTHERS  
U.S.A., INC.**

Franklin County Airport  
P.O. Box 714  
Swanton, Vermont 05488  
**802/868-3188**

In Canada: 514/295-2451

The Producer Oriented Manufacturer  
—SINCE 1890—

**OVER 100 DEALERS IN THE U.S. & CANADA**

# SAP PRICES

This year we are repeating last year's sap prices because syrup prices have remained about the same. We're printing it in case you may have mislaid last year's copy.

Please remember, this chart is published to be used only as a guide and the Digest in no way intends that it should dictate the price paid for sap by any producer.

Retail	22.00	24.00
Wholesale	16.50	18.00
Sap Brix	per. gal.	per. gal.
1.5	.034	.037
1.6	.048	.055
1.7	.062	.07
1.8	.076	.084
1.9	.089	.097
2.0	.10	.109
2.1	.11	.12
2.2	.119	.129
2.3	.127	.138
2.4	.136	.147
2.5	.142	.155
2.6	.151	.164
2.7	.158	.172
2.8	.166	.18
2.9	.173	.188
3.0	.18	.196
3.1	.188	.204
3.2	.196	.212
3.3	.203	.22
3.4	.210	.288
3.5	.217	.236
3.6	.224	.244
3.7	.232	.252
3.8	.239	.26
3.9	.246	.268
4.0	.254	.276

**SOME PEOPLE KNOW THE PRICE OF EVERYTHING  
AND THE VALUE OF NOTHING!**

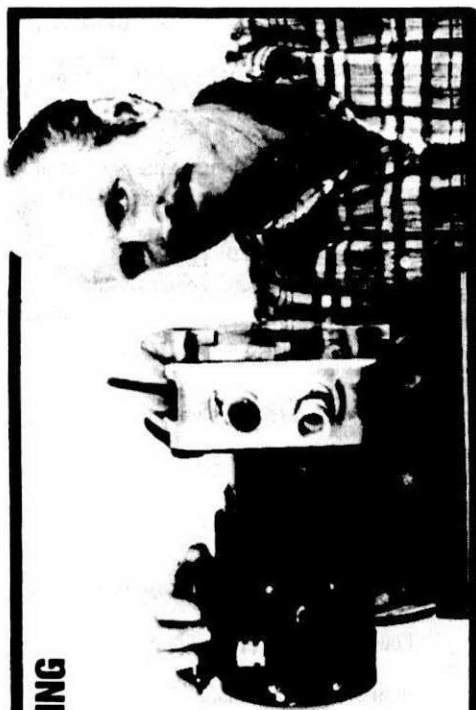
My SAPSUCKER gives me an average of 8 gallons more sap per tap than any other collection scheme I've tried. With 1000 taps that figures out to 8000 extra gallons a year and with sap selling at about 10 cents a gallon, I figure my SAPSUCKER earns me \$800 A YEAR, year after year.

**MISTER, I DIDN'T PAY THAT MUCH FOR THE THING!**

HOW MUCH IS A SAPSUCKER WORTH  
IN YOUR BUSH?

**SUGAR CAMP INC.**

ROUTE 2 - BOX 337, RAPID CITY, MICHIGAN 49674 - PH. 616-331-4378





# New From MEMTEK: ECONOTEK

Memtek is proud to announce the addition of the Econotek Model to its line of Maple Concentrators.

We offer three sizes: Econotek-300  
Econotek-600  
Econotek-900

(Discounts apply)

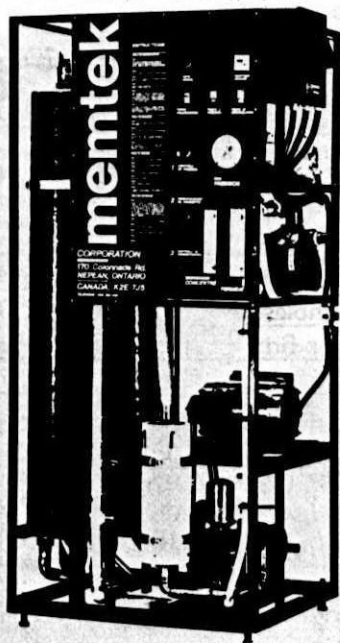
These machines are designed for the do-it-yourself Maple Producer.

They are a very basic machine consisting of the following:

- Welded steel frame
- Feed pump
- High pressure pump
- Recirculation pump
- Pressure control valve
- Concentrate control valve (sweetness can be varied from 4-12% coming out)
- Low pressure shut-off (shuts R/O down if it runs out of sap)
- High pressure mechanical by-pass
- Pre-filter
- Metek's full warranty
- Memteks complete service and maintenance
- Complete delivery, set-up, and start up service
- Pressure gauge-concentrate and permeate flow Meters

- LOWER UNIT COSTS, NOW EVEN MORE COST EFFECTIVE
- VERT. MEMBRANE FOR EASY DRAINING AND CLEANING
- HIGH FLOW RATES FOR A CLEANER, BETTER MACHINE
- EASY TO ENCLOSE AND HEAT.

These are brand new models for Memtek and show our desire to make the best machine for the maple producer at the most reasonable price possible, so see or call your nearest dealer today.



**memtek**  
CORPORATION

87 Bentley Ave.,  
Ottawa, Ontario, Canada  
K2E 8T7  
(613) 226-8381

Mr. Tom Todd  
Todd's Sugar House  
Norwood, New York  
13668 U.S.A.  
Tel: (315) 353-2808

Robert Coombs  
Coombs Maple Products  
Maple Lane  
Jacksonville, Vermont  
05342 U.S.A.  
Tel: (802) 368-2452

Mr. David Mayotte  
R.R. #2  
East Fairfield, Vermont  
05448 U.S.A.  
Tel: (802) 849-6810

Leader Evaporator Co., Inc.  
25 Stowell St.  
St. Albans, Vermont  
05478 U.S.A.  
Tel: (802) 524-4966  
524-3831

Mr. Bill Coombs  
Coombs Sugar House  
Box 186, Junct. Rts 9-100  
Wilmington, Vermont  
05363 U.S.A.  
Tel: (802) 464-5232

Mr. George Fogle  
Sugar Bush Supplies Co.  
2611 Okemos Road  
Mason, Michigan  
48854 U.S.A.  
Tel: (517) 349-5185

Nate Danforth  
Danforth's Sugarhouse  
Country Road  
Montpelier, Vermont  
05602 U.S.A.  
Tel: (802) 229-9536

Frank Schambach  
Schambach's Maple Syrup  
7288 Hayes Hollow Road  
West Falls, New York  
14170 U.S.A.  
Tel: (716) 652-8189

GREETINGS  
FROM  
THE  
CHAIRMAN



Christmas has come and gone. It's hard to believe that in less than two months, we'll be at it again. I'm sort of looking forward to it.

This issue of the digest should have the names and addresses of the research committee and also a listing of the Editorial Board which will help Lloyd bring together material for the digest. Other names may be added later on.

It is interesting to see the notices of new maple supply outlets. I really believe an increased interest in maple production is with us. If competition for maple equipment sales is any indication, we have a true growth industry--at least in the northeast.

Once again my congratulations to the Connecticut Ass'n. for the fine job done in hosting the Council. In spite of what some may think, we are progressing well in accomplishing the directives of the Council. We will meet the challenge of each new issue in the best way we know how, and as quickly as possible.

This will be a good year to tap a few extra trees.

Gordon Gowen

**NATURAL & L.P.  
GAS BURNERS**

**ELMER WINTER**

11171 Sisson Highway, Route 75

North Collins, NY 14111

716-337-3937 716-337-3682

ORDER BY DEC. 1, 1984

# Smada Farms Inc.

has everything a  
MAPLE PRODUCER needs.

**GRIMM - LIGHTNING**

**EVAPORATORS - PANS**

**LAMB TUBING & FITTINGS**

**KRESS JUGS**

**SMALL BROTHERS  
EQUIPMENT**

**BACON JUGS**

**LITHOGRAPHED CANS**

**--- NEW PRODUCT NEWS ---**

**AUTOMATIC DRAWOFF  
110 volt**

A drawoff which completely compensates for barometric pressure changes without a boiling water probe. Digital temperature readout and syrup temperature adjustment from boiling point of water to 9.9 above boiling point.

... ..

**WE BUY & SELL BULK SYRUP  
NEW & USED EQUIPMENT**

**CATALOG AVAILABLE**

Star Route

Rt. 41 N

**GREENE, N. Y. 13778**

**607-656-4058**

# SAP

U.S.A.

# PLASTIC POWER

CANADA

# TRAP!

## BERLINER PLASTICS

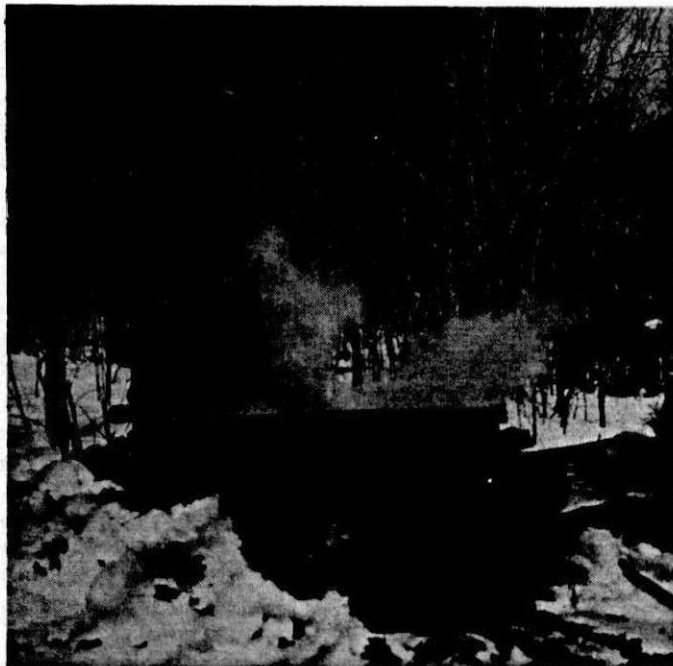
## THE INNOVATOR IN MAPLE SUPPLIES

Berliner Plastics has a full line of MAPLE PRODUCTS including the ORIGINAL FORMULA GREEN WEATHER RESISTANT GRADE TUBING/ORANGE LO-HEAT MAINLINE; PERMGLAS™ USDA Color Comparator and New 3 Year Guaranteed, \$15.00 Retail MAPLETEST™ Liquid Color Grader (traceable to USDA / Agriculture Canada Standards).

### TUBING SYSTEM DISTRIBUTORS

- CONNECTICUT:**  
Woodbury Sugarshred, Rt. 47, Woodbury CT. 06798
- MAINE:**  
Bill Webber Farmington, ME 04938
- MASSACHUSETTS:**  
M.I. Esther Maple Products, Whately, MA 01093  
Al Hubbard, 373 North Street, Dalton, MA 01226  
Paul Zononi, Zoar Road, Rowe, MA 01367
- MICHIGAN:**  
Terry DeLoughary, Bark River, MI 49807  
Lucille Lesh, 2985 Everette, Harrisville, MI 48740  
Ken Sleder, County Rd. 611, Mayfield, MI 49666
- NEW YORK:**  
Sessex Co., T. Hobbs, Ellenburg Center, NY 12934  
Erie County, Brian Fahy, 6161 Genesee Rd., Lancaster, NY 14086  
St. Lawrence Co., Jim Woodrow, Rt. 2, Hermon, NY 13652  
Osego/Del. Co., Matt Kent, RD #1, Franklin, NY 13775  
Ch. & Cal. Co., Gary Peterson, RD 6, Box 192, Jamestown, NY 14701  
Lewis/Jerf. Co., Warren Allen, RD, Castorland, NY 13620  
Gen. & Wyo. Co., Dave Grazioplene, North Java, NY 14113  
Sul. & Ora. Co., Vern Meyer, Long Eddy, NY 12760  
Cdl. & Erie Co., Scotty Burdick, 335 East Rd., Stephentown, NY 12168  
Clinton Co., Barry Branon, 54 Cogan Ave., Plattsburgh, NY 12901
- ALL OTHER COUNTIES OPEN FOR NEW DISTRIBUTORS**
- OHIO:**  
John Martin, State Rte. 96, Bucyrus, OH 44820 419-562-4861  
Sanford Hartman, Box 140, Cty RD 19, Millersburg, OH 44654 216-674-1453
- PENNSYLVANIA:**  
Eugene Gibbs, Box 283-1, Polk PA 16342 814-437-7793  
John Deels, RD 5, Tiltusville, PA 16354 814-676-1097  
J. Curtis Dom, Box 56, Wellersburg, PA 15564 814-324-4414
- WISCONSIN:**  
John Roth, Roth's Sugar Bush, Route 1, Caquot, WI 54727 715-289-3665  
VERMONT / NEW HAMPSHIRE (B. Shelton, Distribution Coordinator)  
Dean Wilber, RFD 10, Concord, NH 03301 603-224-0820  
Ora & Wash., Bill Gehr, RD 2, Barre, VT 05641 802-479-2891  
Caledonia: Bucky Shelton, Sugarwoods Farm, RFD 2, Glover, VT 05839 802-525-3718  
Essex/Ori.: Bucky Shelton, Sugarwoods Farm, RFD 2, Glover, VT 05839 802-525-3718  
Lam.: Bucky Shelton, Sugarwoods Farm, RFD 2, Glover, VT 05839 802-525-3718  
Fra. Co.: John Skuter, Box 680, Fairfax, VT 05455 802-849-6707  
Addison: Bob & Deb's Sugarhouse, RD 1, Brandon, VT 05733 802-247-5566  
Gil Goodyear, Bristol, VT 802-453-4825  
Chittenden: Chas. Elliot, S. Burlington, VT 802-862-2497  
Rutland/R.C.M.P., Ed Mellow, RD. Danby, VT 05739 802-293-5378  
Windham: Vermont Disc. Supplies, Putney, VT 802-463-9566  
Windsor: Chip Kendall, S. Woodstock, VT 05071 802-457-1473  
Dave Harlow, RFD, Ludlow, VT 05149 802-228-7151  
Bill Wyman, Route 115, Jefferson, NH 03584 603-586-4587
- CANADA:**  
Don Atkinson, RR 1, Barrie, Ontario L4M 4YB 705-728-5848  
Ken McDonald, 38 Hillside Ave., Truro, Nova Scotia 902-895-1770  
Jacques Morin, Valcourt, Quebec 514-761-6458

**BERLINER PLASTICS, Mike Berliner, Pres. • 12934 LAKE AVE., LAKE LUZERNE, NY 12846 (518) 696-2478**



Home made arch and evaporator built by Leslie J. Raymond in Swain, NY. A week-end project of 20 taps. New York photo contest prize-winner.

## NEW YORK MAPLE PHOTO CONTEST

Sponsored by the Central New York Maple Producer's Association for the promotion of the New York State Maple industry.

### RULES:

1. Picture must show some phase of maple production.
2. Picture must be taken by person submitting entry.
3. Amateur photographs are encouraged.
4. Color picture or color slide acceptable.
5. Contest open to all residents of New York State.

6. Photo/slide becomes property of Central New York Maple Producer's Association.
7. Entries due by May 1, 1985
8. Prizes - 1st, \$35.00; 2nd, \$25.00; 3rd, \$15.00.
9. Send entries with your name, address and telephone number to William Campbell, Smyrna, NY 13464.
10. Judging will be based on originality and quality.

### EVAPORATORS & SUPPLIES

New & Used

### LAMB TUBING & FITTINGS

ORDER EARLY & SAVE

**ROGER C. SAGE**

4449 SAGE ROAD  
WARSAW, N. Y. 14569

Tel: 716-786-5684

### IN STOCK:

LAMB TUBING SUPPLIES

Electric Tappers

**GORDON H. GOWEN**

Tamarack Farm

Alstead, N. H. 03602 835-6531



## 1984 WISCONSIN MAPLE TOUR

Door County was in full color for our fall maple tour, which was held Saturday, October 6th. Although, Mother Nature, as usual, had her hand in the weather! It was overcast and tried very hard to rain all day.

We began our day at the Carlsville Bar with a record registration, and not all maple syrup producers either. It seems that our tours are drawing in other than syrup makers. Maybe we can convert them!!!!

Our very well planned day, consisted of going to the U.W. Peninsular Experiment Station where we got to see the field lab for fruit specialists. There is 120 acres in which they try to improve varieties, control pests and increase production.

Then we were guests of the Ed Staats Sugarbush, who have been in the maple business for about 15 years. They operate a 4' x 12' evaporator and tap 1300 taps, using tubing and pails.

Next we went to the Roland Jorns Sugarbush, who also were our tour

hosts. They have been making maple syrup for about 45 years. Their operation consists of a 4' x 16' evaporator and a reverse osmosis unit. They tap over 2400 taps.

From here it was off to the famous Door County Fish Boil. For all of us who have never had it, it was quite an experience! We even got to watch them boil the fish. If you ever get into this area, try it, you just might like it!

Our next stop was that of a husband and wife operation, the Ole Olson Sugarbush. Ole does the woods work and his wife Vera runs the 5' x 14' wood fired evaporator. Ole hangs about 1250 buckets.

For a little change, we then went to Ray's Cherry Hut, which was a modern farm market, Egg Harbor Orchard and apple packing plant and the Door County Winery, which was the old Door County Schoolhouse in Carlsville.

Our tour ended with our banquet and small program at the Carlsville Bar. A great big "thank-you" to Roland and Donna Jorns for the terrific day we all had.

Gretchen Grape,  
Holcombe, WI

## American Maple Products

Newport, Vermont 05855

- produces maple syrup,
- buys bulk Maple Syrup from other producers,
- packs Pure Maple Syrup,
- makes Maple Candies, Maple Sugar and Maple Butter,
- wholesales these products to the retailer
- and supplies leading food manufacturers with Bulk Maple Syrup or Maple Sugar.

CAN WE HELP YOU WITH YOUR MAPLE REQUIREMENTS?



## Letter to the Editor

Dear Lloyd,

I would like to express my dismay that the directors of the North American Maple Syrup Council voted 13-1 against taking a position on acid rain and air borne pollution. A motion was made during the annual meeting in October, that would have requested government officials to recognize our concern in the maple industry and called for enforcement of the National Clean Air Act.

One of the reasons for rejection of the motion was that it was incorrectly suggested that enforcement of the Clean Air Act could force sugarmakers to clean up their stack emissions. Even if this were so, it seems that if we are part of the problem we would want to be part of the solution. There will be no need to worry whether evaporators cause pollution if we have no trees from which to produce sap for boiling.

I am not suggesting that there has been wholesale loss of trees because of acid rain, but consider some facts. Most scientists involved with studies of tree health will agree there is a problem, and most believe that steps should be taken **now** to counter the problem. There is more to study about the mechanisms by which acid deposition affects forests, but enough is known to begin developing solutions. There is general agreement that we need not wait until every angle has been examined. Further, there is reason to be concerned about the rapidity with which tree mortality can show up and progress through a geographical area. In Germany the march of death across the forest landscape has been dramatic and fast. Stands of trees appearing unharmed in 1983 are dead today. Apparently the effects compound exponentially.

As an industry we have a great deal to lose. If we lose our sugarbushes, we

have nothing. Problems with marketing, energy efficiencies, packaging, quality control and sugarbush management pale by comparison with the basic issue of maintaining the health and vigor of our resource. We can over dramatize the situation, but we can also be too sanguine about nature taking care of itself. I believe doing nothing or waiting until we have absolute proof that acid rain is a culprit in declining tree vigor is the greater mistake. The most conservative position to take is not to sit back, but to call for controls on air pollution that will protect our resource until we have time to research all the effects of acid deposition.

The Vermont Maple Industry Council has taken such a position. It asked that the matter be considered by NAMSC. The Council speaks nationally and internationally for the maple industry. Except for publishing the **Digest**, the most important role it serves is to communicate with government about important issues facing sugarmakers everywhere. That is why I am so disappointed that this leadership position was not used to confront the problem early. I'm sure it will come up again and then I hope affirmative action will be taken.

David R. Marvin  
Johnson, Vermont

### ULTRAVIOLET LIGHTS

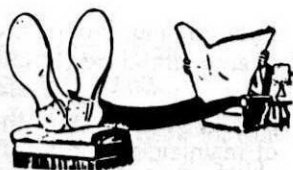
Keep sap better and longer  
Order Yours today  
Contact your local dealer

or call

### BILLS COOMBS

Box 186, Wilmington, VT. 05363  
802-464-5232

## LAMB'S CORNER



In the last issue, I wrote a condensed version of the report I gave at the October Council meeting. I only shoveled off half the load then. Here's the rest of it.

A few years back an honorary system was set up by the North American Maple Syrup Council to give plaques to people who had made great contributions to our maple world.

This year, the first one goes to Mary Coombs of Jacksonville, Vermont. Her dedication to marketing and promotion of maple has been a great contribution to all of us. If the microphone had been portable I would have had her give us greenhorns a few pointers.

Next is Melvin R. Koelling, a conscientious and dedicated research man and teacher. Mel spent many years at North

East Forest Experiment Station and is now at Michigan State University. We appreciate his work and respect his judgement.

Lewis J. Staats, Cornell, NY, is Fred Winch and Bob Morrow's protege and our maple specialist. He lives in Lake Placid and operates the Uihlein-Cornell Experimental Sugar Bush there for Cornell University.

R. W. "Shorty" Danforth and his wife, Florence. You will notice these plaques are made out in the husband's name. This is to show who's boss which is a lot of baloney.

Shorty and Florence have dedicated their entire lives to maple as well as running the Vermont booth at the Eastern

**DEADLINE FOR  
JULY ISSUE - JUNE 1**

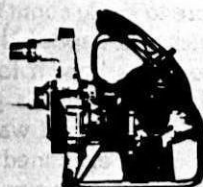
## REYNOLDS SUGAR BUSH, INC.

ANIWA, WIS 54408



Improve Quality of Your Syrup  
Install a Ultraviolet Disinfection Unit  
Reduces Bacteria in Sap  
2 Sizes - 5 GMP (\$475.00)  
10GPM (\$725.00)

All Maple Supplies in Stock



**Tanaka GASOLINE TAPPER**  
\$225.00

**Tanaka GASOLINE PUMPS**  
3/4" - \$199.00  
1 1/4" - \$239.00

Phone **715-449-2057**

**WE WILL BUY ANY AMOUNT OF MAPLE SYRUP**



Gordon Gowen, center, approves as Bob Lamb awards plaque to Mary Coombs.

States Exposition selling up to \$60,000.00 a year. They're usually the first to use all the new innovations that come along.

Of course, Shorty has had his problems to keep up with Florence, but he has kept up. There has never been any slack in the tugs or air under the collars of this pair. One time, at a local syrup meeting, people started telling how big they were in the maple industry. Shorty got sort of disgusted and told them he was the biggest syrup producer in Vermont. He's 6'5" tall and weighs 325 pounds.

Harold and Evelyn Tyler, Westford, NY. Harold is one of the original innovators in the maple world. I didn't even embarrass him by asking how many new ideas he had tried that didn't work. He is also past president of the I.M.S.I.

Until recently, Harold operated a sizeable dairy farm. He perfected a new breed of cattle that had shorter legs on one side so they could feed on his steep

hillsides. His stalls are higher on one side to accommodate the short legs. Getting the cattle off the hills and into the barn is a problem he still hasn't solved.

Bob and Vera McConnell, Couderport, PA., have been leaders in their area for years. They're not only leaders in the maple revolution but have given thousands of hours of time to festivals, tours and is a faithful attender to the Council.

They say Potter and Tioga County, Bob's stamping ground, is God's country, I can believe it. When God made that country, he dumped the dirt in there in tremendous piles and then never came back to level it off. I guess he figured no one would ever want to live there anyway.

In closing, I'd like to wish the best to everyone until we meet again. It may be in Hell but we'll still stick together.

This Article Sponsored  
by

*Bob Lamb*

## HOW TO DO IT - -

### Off-flavored Syrup

Many producers store syrup in tanks and use overhead ultra-violet lights to eliminate surface growth of microorganisms.

If the area over the syrup where the lights are located is sealed or nearly sealed, an objectionable odor may develop which might eventually be absorbed by the syrup causing an off-flavor.

To guard against this possibility, the area over the syrup should be well ventilated but screened to eliminate insects. This will allow the odor to pass off as it is produced and the syrup will retain its original flavor.

## RESEARCH COMMITTEE

The following motion was adopted by the North American Maple Syrup Council at their 1984 convention at Danbury, Connecticut:

- Set up a research fund and a research review committee.
- The committee will set some guidelines for research proposals, a budget limit, and a deadline for receiving the proposals.
- The committee will rank the proposals on their merit, and decide which of these proposals will be funded, depending on the availability of funds.
- The committee will make its recommendation to the Council Executive Committee, that in turn will bring a trial resolution to the Annual Meeting of the Council.
- Results or progress report will be presented at the next NAMSC meeting by the award recipient(s).
- Paper(s) with results of the funded research project(s) will be sent to the Maple Syrup Digest for publication after peer review.

A committee of Lynn H. Reynolds - Wisconsin, David R. Marvin - Vermont, and Darrell F. Russ - Connecticut, was appointed to screen, critique, and recommend research projects to the board of directors of the NAMSC for their consideration towards contributing to and/or funding of such research projects.

Research projects may be submitted for consideration based on the following guidelines:

- (1) Proposals must be received no later than August 1, 1985 for consideration in 1985. Proposals received after that date will be considered in 1986.
- (2) Proposals shall be complete and detailed in content. However, proposals shall contain a short concise cover statement briefly explaining cost, scope, objective, procedure, and anticipated value to the maple industry.
- (3) Proposals shall contain detailed estimated cost breakdown, within the detailed report.
- (4) Proposals shall be submitted with a minimum of five (5) complete copies.
- (5) Proposals must contain a complete reference section listing and explaining any similar or duplicating research previously accomplished. Proposals for duplication of previously completed research must contain detailed explanations of why such duplication is warranted.
- (6) Results or progress of funded projects must be presented annually at the convention of the NAMSC and must be published in the Maple Syrup Digest as soon as possible after completion.
- (7) Send proposals to: Lynn H. Reynolds, Research Committee, North American Maple Syrup Council, Route 2, Box 326, Hortonville, WI 54944.

### *Sugaring Supplies* *Grimm Evaporators & Accessories*

Idle-Hot Farm  
CM-RS LYONS & SONS  
76 Simsbury Rd.  
W. Granby, CT 06030  
Tel. (203) 653-3500

### MAPLE LABELS

Required Information on  
Pressure Sensitive Label For  
Plastic Jugs-Metal-Glass  
For Samples & Prices

**WILLIAM L. CHALMER**

150 Traverse Blvd.

Buffalo, N.Y. 14223 716/877-6016  
Canadian customers-Special Discount  
Canadian Inquiries Invited



# SURVEY

The research review committee has the responsibility for recommending research proposals to the North American Maple Syrup Council for possible contributions toward funding of those proposals. To aid this committee in screening and recommending projects, we of the committee, sincerely invite and urge your participation in the following survey.

1. I am (check only one that most accurately describes yourself).

- |                                                  |                                                                           |
|--------------------------------------------------|---------------------------------------------------------------------------|
| <input type="checkbox"/> A Maple Producer        | <input type="checkbox"/> A Maple Syrup Buyer or Packer                    |
| <input type="checkbox"/> A Maple Research Person | <input type="checkbox"/> A Maple Equipment Manufacturer or Dealer         |
| <input type="checkbox"/> An Interested Party     | <input type="checkbox"/> An Extension, Government, or University Employee |

Other \_\_\_\_\_

(Please do not combine the above Categories)

2. I would like to see research done in the following areas (rate your highest priorities from 1 through 5 - use number [1] as your highest priority).

- |                                                                                                                         |                                                                           |
|-------------------------------------------------------------------------------------------------------------------------|---------------------------------------------------------------------------|
| <input type="checkbox"/> Maple Tree Physiology                                                                          | <input type="checkbox"/> Maple Diseases, Insect and Pathological Controls |
| <input type="checkbox"/> Maple Sap Collection and Handling                                                              | <input type="checkbox"/> Maple Forest Management                          |
| <input type="checkbox"/> Maple Syrup Production                                                                         | <input type="checkbox"/> Maple Syrup Packaging                            |
| <input type="checkbox"/> Maple Equipment                                                                                | <input type="checkbox"/> Maple Syrup Marketing                            |
| <input type="checkbox"/> Maple Sap and Syrup Chemistry                                                                  | <input type="checkbox"/> Maple Decline                                    |
| <input type="checkbox"/> None (Past and Current Research is Adequate)                                                   | <input type="checkbox"/> Acid Rain and its Relationship to Maple Trees    |
| <input type="checkbox"/> All Environmental Factors Affecting Maple Trees (Including Disease, Stress, Health, and Vigor) | <input type="checkbox"/> Other _____                                      |

(Be Specific)

3. Define "Maple Decline" to the best of your ability and as you see it. \_\_\_\_\_

\_\_\_\_\_  
\_\_\_\_\_  
(Please be brief and specific)

4. What do you think causes "Maple Decline"? \_\_\_\_\_

\_\_\_\_\_  
\_\_\_\_\_  
(Please be brief and specific)

5. Do you have a "Maple Decline" problem in your geographical area?  Yes  No

6. Your State or Province? \_\_\_\_\_

7. Do you think we need research to determine possible causes of "Maple Decline"?  
 Yes  No

8. Do you think the North American Maple Syrup Council should raise funds for contributions toward future research projects?  Yes  No



SURVEY (Continued)

9. If your answer to question number 8 is yes, how do you think the North American Maple Syrup Council should raise funds for contributions toward future research projects (check only one)?

- |                                                                                    |                                                                                                        |
|------------------------------------------------------------------------------------|--------------------------------------------------------------------------------------------------------|
| <input type="checkbox"/> Federal Government Appropriations                         | <input type="checkbox"/> University or Other Research Grants                                           |
| <input type="checkbox"/> State or Provincial Appropriations                        | <input type="checkbox"/> Producer, Packer, Equipment Manufacturers, Dealer, and Supplier Contributions |
| <input type="checkbox"/> North American Council Dues                               | <input type="checkbox"/> Private Contributions                                                         |
| <input type="checkbox"/> No Funds Required (Past and Current Research is Adequate) | <input type="checkbox"/> Other _____                                                                   |
- (Be specific)

10. Would you consider contribution towards research if an equitable method were proposed to base such contributions on (this would have to include maple producers, packers, equipment manufacturers, equipment dealers, and suppliers).  Yes  No

If your answer to question 10 is yes, answer question 11, 12, or 13. If No, proceed to question 14.

11. **For Maple Producers and Packers Only.** If you would consider research contributions based on number of gallons of syrup produced or packed, what would you consider a fair contribution per gallon of syrup?

- 1¢/Gallon  5¢/Gallon  10¢/Gallon  20¢/Gallon  Other\_\_\_\_\_

12. **For Maple Equipment Manufacturers, Dealers, and Suppliers Only.** If you would consider research contributions based on volume of business done in the maple industry, what would you consider a fair contribution per volume of business?

- 5¢/\$100  25¢/\$100  50¢/\$100  1.00/\$100  Other\_\_\_\_\_

13. **For Extension, Government, University, Research, or interested Persons Only.** If maple producers, packers, manufacturers, dealers, and suppliers were to contribute funds for maple research, to the best of your knowledge and ability, would you exert every effort and influence to obtain some form of matching funds from government appropriations, university grants, trust funds, private contributions, etc., for contributions toward maple research as approved by the Board of Directors of the North American Maple Syrup Council?  Yes  No

How would you rate the chances of obtaining such matching funds from these sources keeping in mind the industry's possible contributions?

- Excellent  Good  Fair  Poor  No Chance

14. COMMENTS: \_\_\_\_\_

15. No signature necessary, but appreciated. Please submit no later than May 1, 1985 to: Lynn H. Reynolds, Research Committee, North American Maple Syrup Council, Route 2, Box 326, Hortonville, WI 54944

# HOW TO DO IT



## Lights For a Remote Sugar House by Hank Parker, New Hampshire

My sugarhouse is in my sugarbush and is far enough from my house and the powerlines that I do not believe it is economically viable to bring in power from the public utility lines. However I have to work nights like any other syrup maker and I appreciate the convenience of electric lights with their instant off/on, their fire safety as compared to kerosene or gas, and their relative brilliance.

I would recommend the 12 volt battery system that I use to anyone with a non-electrified sugarhouse who would like the convenience of electric lights.

I use an RV storage battery (Sears) to store the electricity because it has a better characteristic for deep cycling than the usual car or truck battery; however a car, truck, or tractor battery would work just as well as long as it was recharged frequently. For light I use a florescent light which I made from a standard incandescent tube used with a special 12 volt dc ballast. I also use small quartz halogen bulbs such are used in the new auto spotlights. The florescent lights are five (5) times more efficient than the usual incandescent car bulbs; the quartz bulbs are twice as efficient as the incandescent bulbs. Such efficiency is important since it means that you can get five times as much light or for five times longer before it is necessary to recharge the battery.

I built my florescent light using the special 12 volt dc ballast that I purchased from IOTA Engineering Company, 4700 S. Park Ave., Suite 8, Tucson, Arizona 85714. The light from these lights is far superior to regular florescent light because it has a frequency of about 20,000 cycles a second instead of the usual 60 cycles which often produces an annoying flicker. In addition to the ballast which costs about \$23 for big bulbs (the 48 inch 40 watt size) to \$15 for small bulbs (24 inch and less), I needed a bulb (on sale for \$2), two terminals to hold the bulb (\$1 each from the friendly hardware store), and a piece of metal eaves trough or a bent piece of sheet metal to hold the bulb and form a reflector. One could also build a wooden frame and reflector but florescent bulbs must have a piece of metal running the length of the bulb in order to start (I'm told). Thus my light fixture is a 40 watt, 48 inch bulb that gives as much light as an incandescent bulb of 200 watts. It uses 3 amps of battery power, thus I can run it for 20 to 25 hours before I need to recharge the battery.

It's very convenient to be able to walk in the door, flick a switch, and have the sugarhouse bathed in light. I use the little bulbs to light up the woodshed when I need another load of wood and to light my canning operation; both uses are only for relatively short periods of time.

Of course if you want to get fancy you could install a solar cell (\$200) to recharge your battery when the sun shines. Or you could use a windcharger (if the wind blows around your sugarhouse) or one of the new small water-wheel-and-generators that have just come on the market (\$400 to \$600) if you have a brook. But don't wait for such expensive options, buy the parts to build a light and enjoy the delight of a well lighted syrup operation this year.

## ANNUAL PENNSYLVANIA MAPLE TOUR

The 1984 Pennsylvania Maple Tour was hosted by the Potter-Tioga Maple Producers Association and the McKean County Producers. Port Allegheny, McKean County was the headquarters for the weekend of September 26 and 27.

About 100 people began the tour at Hammermill Paper Company. A guide explained how one of the largest wood chippers on the east coast operates and how by-products of the chipping are handled and sold. The Port Allegheny site also has a log yard and Hammermill staff explained how the company handles wood lot cutting, sorting and selling of logs to other companies for lumber and furniture.

The next stop was at Silver Hill Farm, the Vincent and Stephen Matthews

maple operation at Shinglehouse. The Matthews have a 6' x 16' evaporator that handles their 1200 taps. The entire operation is on tubing. They built a unique vacuum dumping system that was demonstrated to the group. It was a cold, damp day and homemade donuts, coffee and hot chocolate were really enjoyed by all.

Paul Snyder, Potter-Tioga Assn. President, was master of ceremonies for the annual banquet. Stan Hess, district forester for the host counties, narrated an interesting movie, made in the 1920's that showed how virgin timber was harvested in north central Pennsylvania. Pam Schmouder of Liberty was crowned 1985 Pennsylvania Maple Sweetheart by Deanne Stahlman, '84 Sweetheart. Pam represented the Potter-Tioga Assn. Michelle Bush, Northwest Assn was selected first alternate and Kris Green, Endless Mountains Assn. was second alternate.

On Saturday Morning the tour began

## H. W. Cook Farm Service, Inc.



DeRuyter, N. Y. 13052

Serving the Maple Industry for  
Over 60 years



Leader - King Evaporators  
Gas & Electric Tree Tappers  
Bits, Filters, Spouts  
Sap Buckets, Covers  
(new and used)  
King Plastic Sap Bags  
Metal Decorated Syrup Cans

Sugarhill Plastic Jugs  
Rubber Candy Molds  
Maple Cream Tubs  
Lamb Tubing & Fittings  
Pellets  
Storage & Gathering Tanks

Open daily 8:00 - 5:00

Phone: 315-852-6161 and 315-662-7208

Write for Free Catalog

with a visit to Glenn Cunningham's Maple Camp at Smethport. A district forester discussed how the maple cankerworm defoliated and killed much of the old sugar bush in 1976-78. The trees were removed for logs. This spring the Cunninghams were able to put 350 taps in the young bush and made 53 gallons of syrup. Glenn designed a finishing, filtering and bottling system to be fired by propane and has found it very successful. After coffee and doughnuts, Duane Andrews at Ormsby described how his operation has expanded in ten years from a 2' x 8' evaporator to a 4' x 12', a new sugar house, tubing on vacuum and plans for an aerial system for 1985.

Stroup's Sugar House at Marvindale, was the last stop for the group. Ken decided to move his whole operation to a more visible area and is constructing a 20 x 30' log sugar house along U S Rt.

6. He will have a 4' x 14' evaporator, heated by "used" oil. Because of its location, the building will also serve as a sales area.

A chicken Bar B Que was served to the group at the Kinzua State Bridge. This historic viaduct was originally built in 1882, and was replaced in 1914 for the New York, Lake Erie and Western Railroad Company. It is 301 feet high and 2053 feet long. No longer in use as a rail bridge, the area and viaduct were designated Kinzua Bridge State Park in 1963 and maintained by the Pennsylvania Department of Forests and Waters.

Robert McConnell, business manager of Potter-Tioga Assn. was coordinator of the event. A number of commercial exhibitors had their products on display and were available for discussion during Friday morning registration and other free times during the two days.

## **Sugar Makers**

- \* Lightning Evaporators - by Small Brothers**
- \* Cans - S.M.A. All-State VT#1 - New York Plain**
- \* Tubing - U.S. Maple & Fittings For Your Convenience**

**On Display In Our New Showroom  
A Complete Line Of Maple Equipment**

**NEW ENGLAND MAPLE SUPPLIES, INC.**

**40 Maple Street  
West Rutland, VT 05777  
802-438-2313**

**See Ralph For Unbelievable Low Prices  
Hydrometers 9 In. \$3.99 - Limited Time Offer**



## AMERICAN MAPLE MUSEUM

The American Maple Museum will hold their annual Maple Festival on Saturday, May 18, 1985. Highlights of the day will include: official opening of the museum for the season, induction into Maple Hall of Fame, State Maple Queen Contest, maple parade, equipment and supplies displays, pancake breakfast and chicken barbecue.

One of the highlights of the festival each year is the induction into the Hall of Fame of two persons who have been

### BUDDY SYRUP

Convert to marketable grades  
by new FDA approved process  
For information and prices contact  
**CLAUDE HILLS, Consultant**  
Flourtown, Pa. 19031  
(215) 233-0132

instrumental in the maple industry over the years. This year the North American Maple Syrup Council nominated Fred M. Laing of Vermont and Robert Huxtable of Michigan.

As in the past, any maple producer can nominate persons of their choice. The two who receive the greatest number of votes will be inducted into the Hall of Fame. All nominations must be received at the Museum by March 15, 1985, to be counted.

The Museum committee has started planning for the 1985 New York State Maple Queen Contest. To be eligible contestants must:

1. Be a resident of New York State.
2. Be between the ages of 16 and 21.
3. Be a girl of a maple producing family, or of an employee of a maple producing family, or someone sponsored by a maple producer who has spent at least twenty hours of service in his/her sugarbush.
4. Give a 2 to 3 minute presentation,

MAPLE  
PRODUCTS, INC.  
JACKSONVILLE, VERMONT  
05342

Tel: 802-368-2345

Dealer for a full line of maple sugaring equipment specializing in "Leader" and "King" evaporators.

Many sizes of gathering and storage tanks kept in stock as well as the small utensils used in making maple syrup.

Buying and selling of bulk maple syrup.

Processor and packer of maple syrup and candies in consumer packages.



oral or written, topic of own choosing relating to maple syrup production.

Judging will include appearance, poise, presentation and knowledge of maple syrup production. It is hoped each district or Association will sponsor at least one or two candidates.

Application forms may be obtained from American Maple Museum, Box 82, Beaver Falls, NY 13305. Please mail requests by March 25, 1985.

The schedule for the Maple Festival will be as follows:

- 7:00 AM - 10:00 AM -
- Pancake Breakfast
- 10:30 AM - 1:00 PM -
- Hall of Fame induction
  - State Queen Contest
  - Special Music
- 1:30 PM - Maple Parade
- 2:30 PM - Chicken Barbecue

All day - Games, maple equipment and supplies displays, Museum and gift shop open.

We hope to see all of you on the 18th. The Museum continues to grow, both with displays and visitors. With your support it will continue to grow in the future.

#### SMALL BROTHERS

Lightning Evaporators

The new wood saver

#### REVERSE OSMOSIS

Other equipment & supplies

#### U.S. MAPLE TUBING & SUPPLIES

#### SAPSUCKER VACUUM PUMPS

#### BRODIES SUGAR BUSH

Otsego County Route 34  
1 mile off N. Y. 165 in South Valley  
Westford, N. Y. 13488 607-264-3225

# NEW YORK STATE

## Lithoed Metal Containers



- For Dealer Nearest you contact us.
- Dealer Inquires Invited

### Prime Container Corporation

P.O. Box 38, 40 Marble St.

West Rutland, Vt. 05777

802-438-2312

## NEW YORK MAPLE ASS'N BUILDS SUGARHOUSE

The Northeastern New York Maple Producers' Association decided in late May, 1984 that they would build a Sugar House on the Clinton County Fair Grounds and have it in operation opening day of the fair, July 31, 1984.

Producers contributed the trees (12) cut, trucked and sawed the logs at a producers mill for a 30' x 50' board and batten sugar house on a concrete slab already in place. Building studs 3" x 6" and many boards 14"-16" wide.

The Champlain Valley Beekeepers Association helped to erect the building and they use 150 square feet in the building.

The mutual construction date of June 22nd had 35 volunteers assembling

the frame. Work progressed rapidly and the only framing expense was for nails, roofing and the tracks for two doors.

The Sugar House has 100 amp service, twenty outlets, and counter top with 3 ss sinks.

Sixty feet of sales counter are conversation pieces, 2" pine planks 22" wide with natural finish. These have been stored as rough planks for many years. This was one of several contributions by one producer, a hard working, real ordinary, enthusiastic old timer.

Many people contributed much, including time, effort, know how, material, supplies, equipment, product, utensils, money and financing to assure a first class operation worthy of the many compliments received.

One hundred people contributed the 720 person hours to operate the building during the Fair.

All maple syrup, sugar and cream sold were contributed. Products sold included: Maple syrup, sugar cream, sugar on snow, maple frosted doughnuts, maple flavored sno-cones, tea, coffee and milk.

Producer supplied and manned the steam kettle to make sugar and cream.

3' x 10' oil fired evaporator with storage tank was fired from time to time to give the effect of boiling sap.

Producers supplied many exhibits both old and new.

A spout display, wood, metal and plastic covering a hundred years.

Wood buckets and pails, galvanized and aluminum buckets, sap bags, snow shoes, bit brace, breast drill and back pack tapper. Yokes for man and beast covered a period of maple history. Model sugar house made several years ago.

Section of maple tree 103 years old, taped 200 times, produced 50 gallons of maple syrup. Value of sap produced every ten years equal to wood or timber value of tree.

### FILTER BAG LINER

SAVES TIME  
INCREASES LIFE OF BAGS



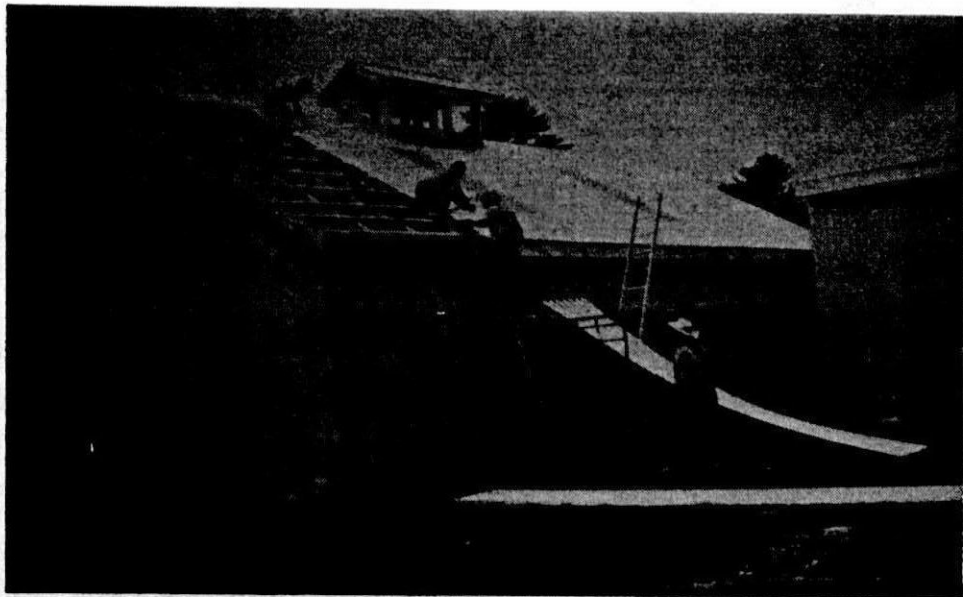
No need to remove filter bag from syrup filtering tank. Just remove liner from bag, rinse out solids in hot or cold water and replace. Liner has long life with careful use.

#### KOPEL FILTER PAPER COMPANY

2512 S. Damen Avenue, Chicago, Ill. 60608

Phone: 312-847-7174

Serving the Maple Syrup Industry  
more than 25 years



Modern equipment included forced draft, economizer, pressure filter, tubing and vacuum system, reverse osmosis.

New York State Pure Maple Syrup, produced in New York posters, sugaring scenes and pictures decorated the walls. One producer was offered \$1,000 for a painting of his Sugar House.

An objective evaluation of Fair week would be that the building and exhibits were great, very successful, many compliments. Maple awareness was

promoted. Sales were not as great as hoped for but good for a first effort.

Barry Branon

*There's More For Your Money At*

## **MAPLE HILL FARMS**

**Small Brothers Evaporators**

**Kress Jugs - Lamb Tubing**

**Litho Cans - Glass Jars**

**5 to 55 Gallon Barrels**

**CALL TODAY FOR A LOW PRICE QUOTE**

Victor E. Putnam

Maple Hill Farms

R. D. 1

Cobleskill, NY 12043

Telephone:

518-234-4858

or

518-234-4726

## **THE SYRUP MAKER'S DREAM**

**IPL** SAP TUBING

**SMALL BROS. & GRIMM  
EVAPORATORS**

**SAPSUCKER VACCUM PUMPS**

**OSMONICS & MEMTEK  
R. O. MACHINES**

**KRESS & SUGARHILL JUGS**

**DAVIES CANS and MANY**

**OTHER ITEMS TOO**

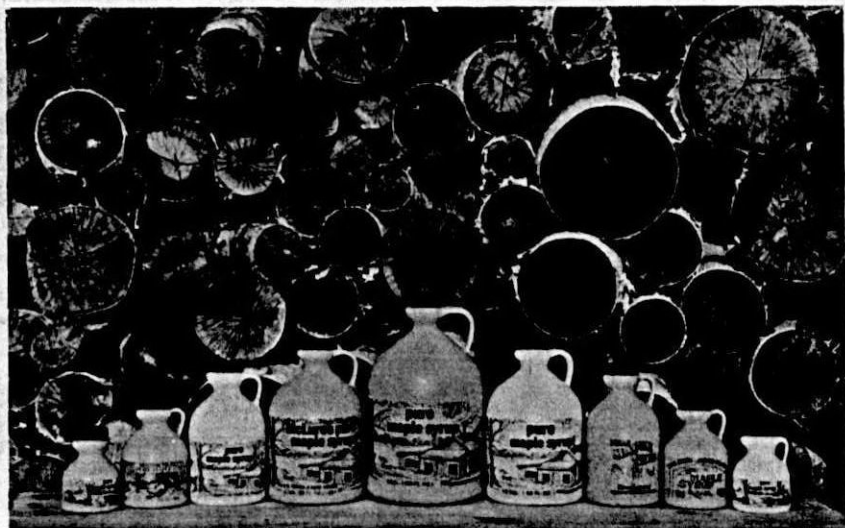
**ORDER NOW AND SAVE!**

**SCHAMBACH'S MAPLE SYRUP  
EQUIPMENT & SUPPLIES**

**7288 Hayes Hollow Road  
West Falls, New York 14170  
(716) 652-8189**

# sugarhill

MAPLE CONTAINERS



Quality Polyethylene Containers  
with all materials F.D.A. approved

"SEE YOUR DEALER"

OR CALL

SIS - (413) 665-2111

RUSS - (413) 625-2866



# U.S. MAPLE, Inc.

Producer owned and operated.

Sugar makers with extensive tubing experience  
concerned about quality and service.



Still Doing It  
This Way?

★ Save labor and increase efficiency with a  
modern U.S. Maple tubing system.

Owner	Bascom's Sugar House - RR 1, Box 138, Alstead, NH 03602	603-835-6361, 835-2230
Owner	Troy Firth - 136 Mechanic St., Spartansburg, PA 16434	814-654-7338, 654-7265
Owner	Maple Syrup Supplies - P.O. Box 245, Pottersville, MI 48876	517-645-7305
Owner	Mayotte's Maple Products - RD, E. Fairfield, VT 05448	802-849-6810
VT	Francis Carlet - E. Peacham, VT 05862	802-592-3336
	Hilton Foote - Cornwall Cider Mill Rd., Middlebury, VT 05763	802-462-2472
	Martin Collins - RFD 3, Putney, VT 05346	802-387-5757
	Nate Danforth - County Rd., Montpelier, VT 05602	802-229-9536
	Bill Coombs - Box 186, Wilmington, VT 05363	802-464-5232
	Dale McLenithan - RD 2, Barbers Pond Rd., Bennington, VT 05201	802-442-4521
	Bill Moore - Morgan, VT 05853	802-895-2764
	New England Maple Supplies Co. - 40 Marble St., Rutland, VT 05777	802-438-2312
	Small Brothers U.S.A. - PO Box 714, Swanton, VT 05488	802-868-3188
	Bob Twitchell - RFD, Rt. 100, S. Londonderry, VT 05155	802-824-5295
	Charlie Welch - Welch Brothers, S. Royalton, VT 05068	802-763-8140
NH	David Douglass - Center Conway, NH 03813	603-447-5120
	Bill Nichols - Nichols Hardware, Lyme, NH 03768	603-795-2214
	Richard Moore - Sunnyside Maples, RD 8, Concord, NH 03301	603-267-8217
	Frank Owen - Colebrook, NH 03576	603-237-4432
MA	Jeff Mason - Red Bucket Sugar House, Kinne Brook Rd., Worthington, MA 01098	413-238-7710
	Will Shattuck - Devon Lane Farm, Belchertown, MA 01007	413-323-6607
CT	Louis Berecz - 41 Washington Rd., Woodbury, CT 06798	203-263-3996
ME	William Webber - P.O. Box 161, Farmington, ME 04938	207-778-4234
	John Steeves - Box 216, RFD 3, Skowhegan, ME 04976	207-474-5262
NY	David Baitscholtz - Box 107, Rensselaerville, NY 12147	518-797-3402
	Frank Brodie - County Rt 34, Westford, NY 13488	607-264-3225
	Tom Bryan - Green Rd., Erieville, NY 13061	315-662-3204
	Osborne Gaines - RD 2, Box 60 (N. Bennington, VT), Hoosick Falls, NY 12050	518-686-5505
	Charles Metzger - Crane Mt. Maple Products, Box 34, Warrensburg, NY 12885	518-623-2226
	David Nascimbeni - Glen Durham Sugar House, Cairo, NY 12413	518-622-6978
	Stanley Rushford - Ellenburg Depot, NY 12935	518-594-3230
	Randy Sprague - 51 Maple Ave., Portville, NY 14770	716-933-6637
	Todd's Sugarhouse - Rt. 1, Box 470, Norwood, NY 13668	315-353-2808
PA	Dale Jeffrey - W. Salisbury, PA 15565	814-662-2904
MI	Dodd's Sugarshack - 1654 Dodd Rd., Niles, MI 49120	616-683-3283
	Elm River Sugarbush - Ted Johnson, Rt. 1, Box 104, Toivola, MI 49965	906-288-3434
OH	David Stump - New Washington, OH 44854	419-492-2731
WI	Roth's Sugar Bush - Rt. 1, Cadott, WI 54727	715-289-3665
	Polak's Sugar Bush - Rt. 2, Merrill, WI 54425	715-536-4032

Agents wanted for certain locations. Contact any of the owners.

## Massachusetts Maple Producers Association Benefits of Membership

The Association exists primarily to 1) promote Massachusetts as a syrup producing State, 2) purchase standardized containers which identify the contents as Massachusetts produced syrup, 3) serve as a vehicle for the exchange of ideas among Massachusetts maple producers.

Benefits include

- 1) Subscription to "Maple Digest"
- 2) Sugarhouse listing in statewide directory distributed through tourist and agricultural groups
- 3) Opportunity to purchase at a discount standardized containers identifiable nationwide as Massa-

## SUGAR BUSH SUPPLIES CO.

- COMPLETE SUPPLIER TO THE MAPLE PRODUCER
- WE STOCK BACON JUGS, LAMB TUBING SYSTEM
- AUTUMN LEAF CANS, LABELS & CREAM TUBS
- LEADER, KING, VERMONT EVAPORATORS NEW & USED
- WE BUY USED EQUIPMENT & MAPLE SYRUP

Give Us A Call or  
Write For Catalog

2611 Okemos Road  
Mason, Michigan 48854  
Tel - (517) 349 - 5185

chusetts produced

- 4) Participation in Annual Meeting and Summer Picnic
- 5) Opportunity to supply syrup for sale at Eastern States Exhibition and to volunteer there as a representative of Massachusetts maple producers
- 6) Opportunity to use materials bearing the Associations name and logo in the promotion of your own product
- 7) Participation through the Association in various promotional activities and grants funded partly or wholly by the Massachusetts and U.S. Depts. of Agriculture

The Association makes a strong effort to identify Massachusetts maple pro-

**NEW & USED**

# Sugaring Supplies

SMALL BROS. & GRIMM EVAPORATORS  
AND ACCESSORIES • US MAPLE  
TUBING • SUGARHILL NH, VT & ALL  
STATE CONTAINERS • RO EQUIPMENT •  
BULK, WHOLESALE & RETAIL SYRUP SALES

SEND FOR  
CATALOG  
(\$1.00 outside  
New  
England)



## Bascom's Sugar House

R.D. 1, Box 138  
Alstead, NH 03602  
(603) 835-2230 or  
835-6361

ducts as top quality produce. We work closely with the State Dept. of Agriculture to encourage Massachusetts residents to buy within state (Massachusetts Grown...and Fresher, and "Keep Massachusetts Growing"). While we cannot conduct actual inspections, we expect our members to conform to all state and federal standards regarding the production and sale of maple products. We try to disseminate information to our members that helps them maintain strong quality control.

The Massachusetts Maple Producers Association is a non-profit organization. We raise funds for our activities through 1) commission on container sales 2) membership dues 3) occasional grants from governmental agencies.

We are governed by a 9 person Board of Directors elected by the membership to three year terms. In addition, a Coordinator(s) is paid to organize most functions of the Association and to order, house, and dispense all containers and materials. The Coordinator(s) serve at the appointment of the Board of Directors.

Dues in the Association are currently \$10 per year and cover membership from January to January. Dues paid by January 15 for the following year will include a subscription to the Maple Digest. Membership is open to all Massachusetts maple producers, and to others directly involved with maple sugaring. Massachusetts producers who are members get one vote per membership at the annual meeting. We will place interested parties on our mailing list without other membership benefits upon written request.

Further information is available from: Rick and Pat Chandler, Coordinators Mass Maple Producers Assoc. P.O. Box 207, Ashfield, Mass. 01330.

## CLASSIFIED

4' x 12' Grimm Lightning evaporator, wood fired, SS pan complete, 20 hp steam boiler with SS 2' x 8' V type steam finishing pan and stand. 2 Lynn oil burners, 15 GPH (excellent). Will sell or trade for Syrup. (518) 853-4022

Reverse Osmosis, removes 40% at 5 gph, new membranes, pump rebuilt, \$1495. Don Mount, Box 74, RD 1, Two Harbors, MN 55616

3 x 8 Leader wood fired evaporator with steam hoods, arch and stainless front pan. Complete: \$2000.00. Extra parts. Must see to appreciate. Fisher's Mountain Sugar House, Grassy Meadows, WV 24943

DEALERS WANTED! Now for the first time ever you can become an I.P.L. tubing dealer. A dramatic break-through in marketing makes this possible. Phone or write today. Schambach, 7288 Hayes Hollow Rd., West Falls, N.Y. 14170 Ph. 716-652-8189

WANTED: Agents or Distributors to sell complete line of Canadian Maple Syrup Equipment. SMALL BROTHERS INC., P.O. Box 160, Dunham, Quebec, Canada. JOE IMO. Tel: 514-295-2451

Plastic Barrels - Food grade, used once for apple juice. Indestructible. 41 - 61 gal. open & closed top. 1 - 9 @\$10.00 10 or more @\$8.00 (413) 628-3286 or 628-3873 Ashfield, Mass.

FOR SALE: 3 x 10 Lightning s.s. pans, preheater hood, 35 bbl. storage tank, 7-1/2 bbl. gathering tank, sap pump, filter press, finishing pan, lamb tapper, 900 taps & all tubing. . . 2-1/2 x 8 Lightning wood fired w/blowers, s.s. pans, preheater and syrup pan hoods. 5 x 10 King flue pan. 4 x 16 Grimm complete. 3 x 8 Leader pans. 3 x 8 Grimm pans 6w x 4 l s.s. lightning syrup pan, large s.s. filter tanks, storage tanks, cream machine. 3,000 - 4,000 taps used tubing, 50 gal. aluminum and 25 gal. copper steam kettles. 5' x 10' Lightning Stainless Flue pan \$2200. SMADA FARMS, Star Route, Greene, NY 13778 607-656-4058

# Quality Runs in the Family.



## Hussey Bacon Jugs: A Proud Tradition.

From our sturdy gallon jugs to the newest 3.4 ounce Sampler size, Hussey Bacon jugs are made with pride to hold fine syrup.

Molded from the best virgin resin and rigorously inspected, our jugs have an appealing old fashioned color and texture.

Syrup producers have relied on our quality for years. It's all in our new booklet, **Pure and Simple**. For your free copy, write to Charlie Bacon at the address below.

- Famous Bacon Jugs—8 oz., pint, quart, half-gallon, gallon and our new 3.4 oz. Sampler jug.
- Embossed Maple Leaf Flasks—14 oz. transparent plastic to show off your finest syrup. Also available in traditional Bacon color.
- Custom Printing— jugs and labels.
- Name and Grade Labels.
- Cartons—individual mailers and multi-pack shippers.



Hussey Molding Corporation  
One Sundial Avenue  
Manchester, NH 03103  
603/669-2500



## Where to Find Bacon Packaging:

### Maine

- Kinney & Hodgkins Maple Supplies, Thorndike, ME 04986 ..... (207)568-3683  
Kinney & Hodgkins Maple Supplies, Yarmouth, ME 04096 ..... (207)846-4570  
Maine Maple Products, Inc., Titcomb Hill, Farmington, ME 04938 ..... (207)778-3803

### Massachusetts

- Devon Lane Farm Supply Inc., Daniel Shays Hwy., Belchertown, MA 01077 ... (413)323-6607  
James Ewen & Sons, 66 Elmwood Rd., Lunenburg, MA 01462 ..... (617)582-6655

### Michigan

- Sugar Bush Supplies, 2611 Okemos Rd., Mason, MI 48854 ..... (517)349-5185

### New Hampshire

- R.N. Johnson, Walpole, NH 03608 ..... (603)756-3321  
N.H. Maple Producers Assn., Warehouse, Rt. 106, Loudon, NH 03301 ..... (603)783-9961  
Richard Moore, RFD No. 8, Concord, NH 03301 ..... (603)267-8217

### New York

- Scott F. Bonno, Route 4, Box 146, Canton, NY 13617 ..... (315)386-8951  
Lansing Burdick, 335 East Rd., Stephantown, NY 12168 ..... (518)733-5591  
Campbell's Maple, Smyrna, NY 13464 ..... (607)627-6653  
Charles R. Emerson, RD 1, Alfred Station, NY 14803 ..... (607)276-6481  
Farnum & Cumming Maple Products, Locust Street,  
Roxbury, NY 12474 ..... (607)326-7226 or (607)326-7569  
David Nascimbeni, Glen Durham Sugarhouse, Cairo, NY 12413 ..... (518)622-9878  
Larry Smith, Rt. 55, Box 177, Napanoch, NY 12458 ..... (914)647-5539  
Harold Tyler, Maple Farms, Tyler Rd., Westford, NY 13488 ..... (607)638-9474  
Neil C. Wright, 28 Liberty St., Camden, NY 13316 ..... (315)245-1434 or (315)245-1519

### Ohio

- Wyman W. Manes & Son, East Orwell, OH 44034 ..... (216)583-2387  
Richards Maple Products, 545 Water St., Chardon, OH 44024 ..... (216)286-4160  
O.C. Stevens & Son, Maple Lane Farm, Mt. Gilead, OH 43338 ..... (419)946-3300

### Pennsylvania

- Curtis Dom, Rt. 160 - P.O. Box 56, Wellersburg, PA 15564 ..... (814) 324-4414  
Dale Jeffrey, Box 15, Wagners Rd., W. Salisbury, PA 15565 ..... (814)662-2904  
Northeastern Pennsylvania Maple Producers Association  
Court House, Honesdale, PA 18431 ..... (717)689-2353 or (717)253-5970  
Potter-Tioga Maple Prod. Assn., Coudersport, PA 16915 ..... (814)274-8540  
Robert McConnell, Coudersport, PA 16915 ..... (814)274-9143  
H.W. Russell & Sons Maple Farms, Rome, PA 18837 ..... (717)247-7361

### Vermont

- Donald Amero, W. Woodstock VT 05091 ..... (802)457-3722  
Clark Brothers, Wells, VT 05774 ..... (802)325-3203  
The Dakin Farm, Ferrisburg, VT 05456 ..... (802)877-2936  
Danforth's Sugar House, County Rd., Montpelier, VT 05602 ..... (802)229-9536  
Gordon Goss, RFD, Barnet Center, VT 05821 ..... (802)633-2276  
David R. Marvin, Johnson, VT 05656 ..... (802)635-7483  
David Mayotte, E. Fairfield, VT 05448 ..... (802)849-6810  
New England Maple Supplies, 40 Marble St., West Rutland, VT 05777 ..... (802) 438-2312  
Small Brothers Inc., P.O. Box 714, Swanton, VT 05488 ..... (802) 868-3188  
Vermont Sugar House, Exit 3, I-89, So. Royalton, VT 05068 ..... (802)763-8809

### Virginia

- Ivan Puffenbarger, Rt. 637, Blue Grass, VA 24413 ..... (703)474-2771

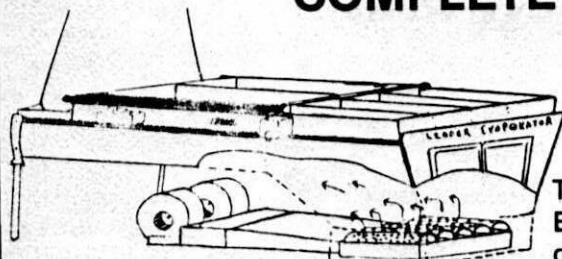
### Wisconsin

- Reynold's Sugar Bush, Inc., Aniwa, WI 54408 ..... (715)449-2057

### Quebec

- Small Brothers Inc., P.O. Box 160, Dunham, Quebec, Canada JOE 1M0 ..... (514)295-2441

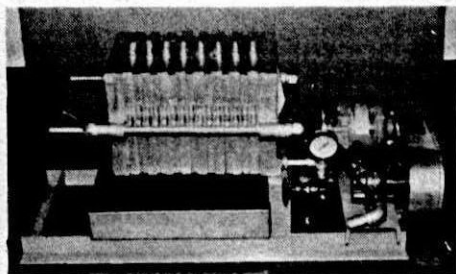
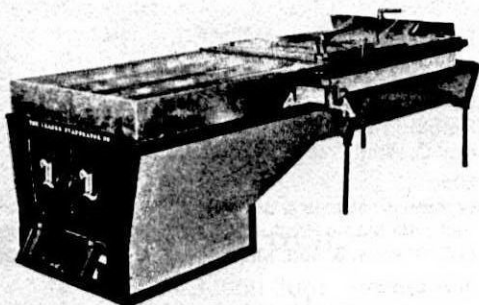
# LEADER EVAPO COMPLETE SUPPLIER TO THE



Forced Draft Unit

This unit will increase the BTU's by 10% to 20% and reduces the wood consumption by 30% to 50%. Can be installed in any wood fired arch.

LEADER KING VERMONT  
EVAPORATORS  
STORAGE - GATHERING TANKS  
MADE WITH DOUBLE SEAM  
LOCKS FOR DURABILITY  
RAITHBY ECONOMIZER  
MEMTEK R.O. MACHINES  
LAMB TUBING & FITTINGS



Leader Maple Syrup filter press.

10" plate & frame filter Press,  
filters upwards to 150 gallons  
before needing paper change.  
No cloths needed.

## Leader Evaporator Co. Inc.

25 Stowell St.  
St. Albans, Vermont 05478  
TEL: (802) 524-4966 or 524-3931

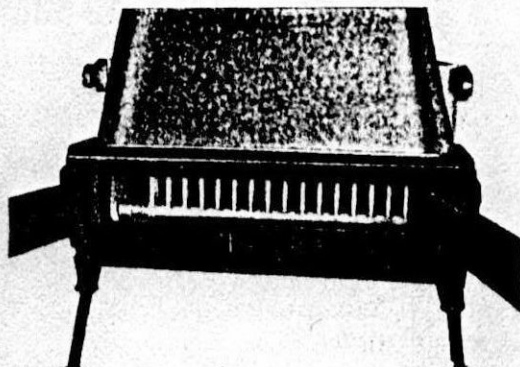
# RATOR CO., INC.

## MAPLE PRODUCER SINCE 1888

COMPARE QUALITY BEFORE YOU BUY

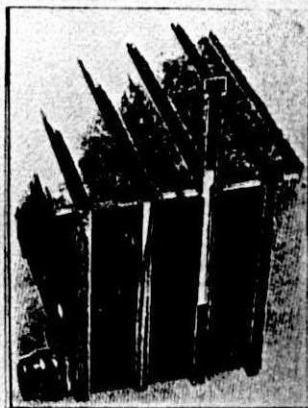
### REAR VIEW OF LEADER ARCH

We have built the rear of the Leader arch of the same quality castings, featuring wide doors for the convenient cleaning of flues. It is very essential that flues be kept clear of soot and carbon if best results from fuel are to be obtained. A flue brush is included with each rig. Note the seamless drawn copper drain pipe 1 1/8" square, firmly soldered to the bottom of the flues which, through a 3/8" hole in each, are quickly drained, flushed and automatically cleaned.



## Have A Good Season

### LEADER FLUE CONSTRUCTION



Notice the double locked seam construction used in our flue ends resulting in four thicknesses of metal at this point. The ends are then saturated with hot solder. Each step is carefully brought out in the picture at the left. To give added protection the flue ends at the front of the flue pan which come in direct contact with the flames are also soldered on the inside. These sections are then fastened together by a special method of locking seams which ensures a tight rigid joint. This method eliminates

any danger of moisture accumulating in the seam itself. The inside of a Leader seam has never been known to rust out. Notice heavy brass flange securely attached to end of drain pipe and side of flue. Here again you see that extra quality found throughout the LEADER.



# **LAMB** *Naturalflow*

**NOTHING IS PERFECTED  
UNTIL IT IS SIMPLIFIED**

**“Naturalflow”**

**The Original & Backbone of Maple Tubing**

**First, & most important, 2 new models of a new Spout System that we believe will obsolete previous Spouts, no gimmicks, does it all, and will save hours of time. Pat.Pend.**

**2nd. 2 new models of a new Tee for some installations.**

**3rd. A heavy duty 5/16 Y for occasional use where it will help.**

**Then there will be 5 other new items or improvements.**

**This will make us well over 100 special items we have just for **MAPLE** Sap Production. Most of them we Mfg. ourselves.**

---

**Send for literature, or better yet, contact  
your local Naturalflow dealer.**

---

**NATURALFLOW & MAPLEFLOW**

**Naturally**

**Robert M. Lamb**

**P. O. Box 368 Route 49  
Bernhards Bay, N.Y. 13028**

**Phone (315) 675-3652  
Home (315) 675-3559**